



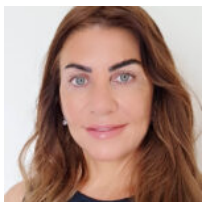
\$385,000

LOS CORALES BEACH, PUNTA CANA 23000, DOMINICAN REPUBLIC

<https://caribbeandreamsrealty.com>

Welcome to Navio! This is a project of 50 apartments from 85 to 164 m2, all with large terraces strategically arranged diagonally facing east, which takes advantage of and allows a greater flow of wind in all the spaces of the apartments. In addition to maintaining the visual focus towards the most attractive point of [...]

- 2 beds
- 2 baths
- Condos and Apartments
- For Sale
- Built
- 127.3 m²



Joan Howell

WhatsApp message

